

TWO WAY INTEGRATION

Live availability to automatically upload directly from PMS/CRS

ANALYTICS & REPORTING

Powerful tools to help you improve performance and see where you stand with competitors

SELF MAPPING

Effortless mapping of room types from your PMS/CRS to all channels

ROOM POOLING

Sell the same room for different rates depending on length of stay

AT A GLANCE

A simple, intuitive dashboard to outline all active channels, rooms & connections

INTUITIVE PRICING (IP)

Set rules to ensure your rooms are automatically listed at the best price

MASTER RATES

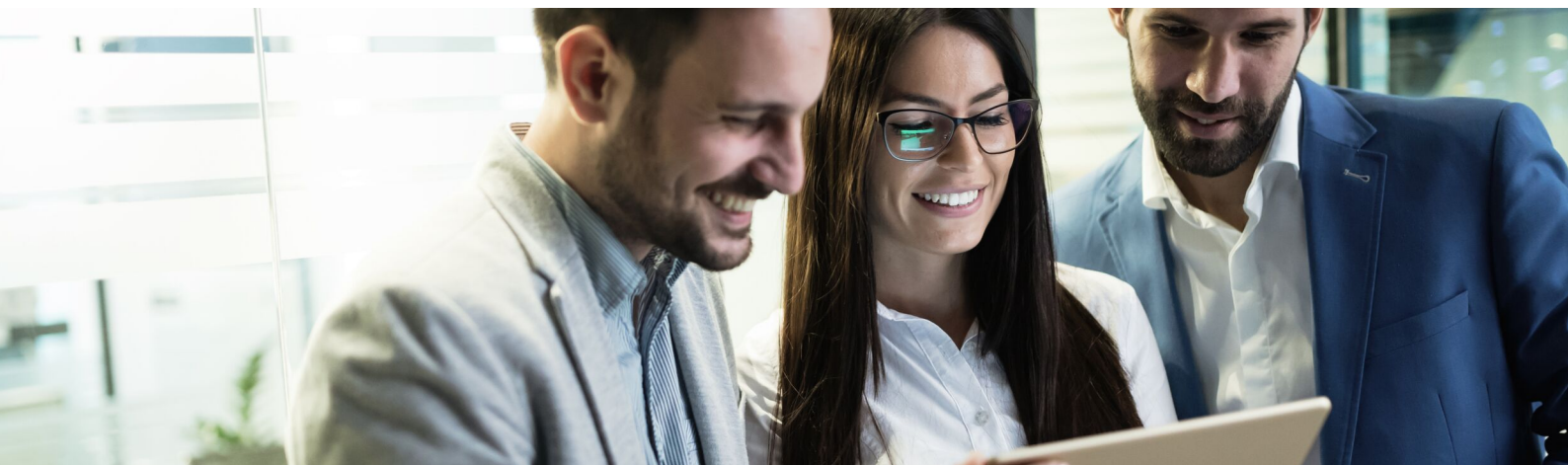
Automatic updates based on your set rules for seasons across channels

REAL TIME UPDATES

Inventory is automatically updated in real time when booking is made across all channels

ONE LOGIN

Just one simple login for all properties and channels



GO PLATINUM WITH THE BELOW FEATURES!

MORE CONNECTIONS

Including access to Vacation Rentals & Airbnb

ENHANCED DASHBOARD

More data and insights on your properties

ANALYTICS & REPORTING

Even more data and reporting options

COMPREHENSIVE CAMPAIGN TRACKING

Easily track your campaigns and promotions in one place

UPGRADED BOOKING FORM

Modern & responsive booking form that improves guest experience

INVENTORY EVENT TRACKING

Easily track local events to keep staff up to date on special rates & promotions

PRICE COMPARISON

Display current online prices from your leading channels vs. direct booking to encourage booking direct

AMENITIES

Show customers what amenities are available in your rooms

Want to be connected to the world's leading channels?

Call (07) 5574 4990 or email sales@hirum.com.au